

Care of Unit:

When you receive your mouth stick stylus you should sanitize the mouthpiece with at least 70% Isopropyl alcohol. We also recommend cleaning after daily use. The Adjustable Stylus mouth piece can be cleaned with 70% Isopropyl alcohol or hot water and dish washing detergent. Then allowed to air dry or pat dry with a clean cloth.

Remove and clean the bite sleeves. Each mouth stylus comes with two sets of bite sleeves so that one set may be worn while the other is being cleaned and stored after use.

Remove the bite sleeves by holding the biteplate neck securely in one hand. Use the other hand to squeeze the sleeves sides. Do not apply pressure to the front and back surfaces, as the sleeves will resist removal. After taking off the sleeves clean them using hot soapy water and/or Isopropyl alcohol 70%.

Clean the biteplate. This step should take place only after the bite sleeves have been removed. Use the same cleaning agents as used for the bite sleeves. Replace bite sleeves after the biteplate is completely dry.



For Technical Support:

Call our Technical Service Department
Monday through Friday, 9 a.m. to 5 p.m. (EST)
1-800-832-8697

customer_support@enablingdevices.com

Adjustable Touch Screen Mouth Stylus #9089

USER'S GUIDE



50 Broadway
Hawthorne, NY 10532
Tel. 914.747.3070 / Fax 914.747.3480
Toll Free 800.832.8697
www.enablingdevices.com

Sturdy yet lightweight!

This lightweight adjustable stylus works with the slightest touch on your tablet or smart phone. Its telescoping stainless steel shaft easily adjusts from 8½" to 15". The plastic bite plate with rubber sleeves allows the user to firmly yet comfortably hold the stylus. Comes with an extra pair of protective thermoplastic rubber sleeves for the bite plate. *Size: 3/8"Diameter x 8½" to 15"L. Weight: 1½ oz.* Replaceable tips available separately. Item No. 9084.

Operation:

1. When you receive your mouth stick stylus you should sanitize the mouthpiece with alcohol. To begin using you may first install the rubber bite sleeves on the plastic bite plate shown in figure 1.



Fig.1

2. The Adjustable Stylus is on a telescopic rod you can adjust its length to fit your needs. The Adjustable Stylus telescoping stainless steel shaft easily adjusts from 8½" to 15". See figure 2.



Fig.2

Replacement Tips:

When it comes time to replace the Stylus tip you will first need to remove the band of silver tape wrapped around the base of the Stylus. Next you will unscrew the tip and replace it with one of the replacement tips (sold separately). See figure 3. The replacement tips will include a new tape strip to re-apply to secure the tip to the Stylus. **Please Note:** The tape must be used to prevent the tip from becoming a choking hazard for young children.

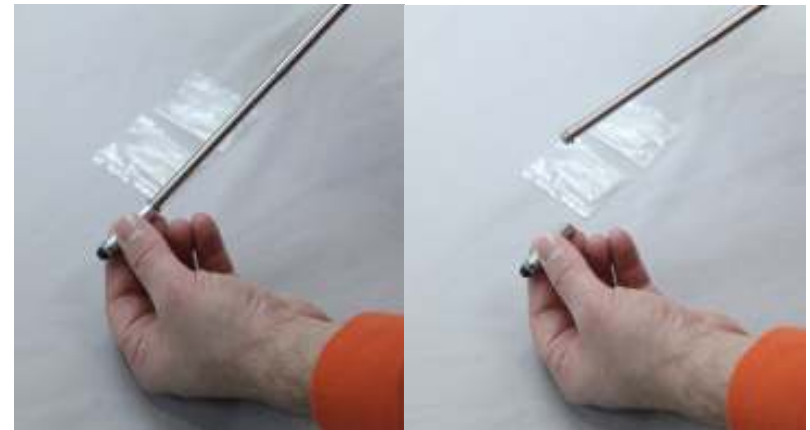


Fig.3

Rev 6/5/17